



You Can Do It

PROJECT

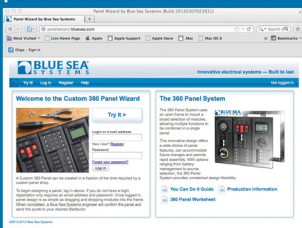
Design and Order a Custom Panel

Get the panel you want

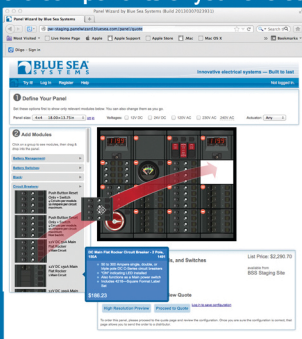


DESIGN AND ORDER A CUSTOM PANEL ONLINE

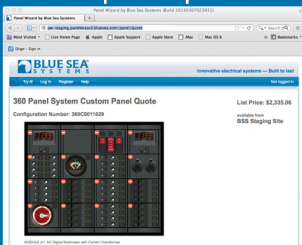
1 Launch the Panel Wizard at panelwizard.blueseasystems.com.



2 Design the panel modules with the components of your choice.



3 Confirm the panel design and submit a quote request.



Panels are hand assembled and ship within seven days of order receipt

A custom panel can be created in a fraction of the time required by a custom panel shop.

Blue Sea Systems can build all panel sizes from a single module to a panel with 100 circuit breakers at its Bellingham, Washington facility. Panels ship within seven days of order receipt.



The 360 Panel System uses an open frame to mount a broad selection of modules that allows multiple functions to be combined in a single panel.

This innovative design offers a wide choice of panel features, can accommodate future changes, and permits rapid assembly and shipping time. With options ranging from battery management to source selection, the 360 Panel System provides unmatched design flexibility.

Design a custom panel using the Panel Wizard at panelwizard.blueseasystems.com or the Custom 360 Panel Worksheet available at www.blueseasystems.com.

GO FROM HERE:

A mix of different styles of control switches and monitors



TO HERE:

Consolidate your desired functions into a single integrated panel using the Blue Sea Systems Panel Wizard at panelwizard.bluesea.com



CUSTOMERS CAN EXPECT:

FAST, DEPENDABLE DELIVERY

Built-to-order manufacturing has made Blue Sea Systems rank among the top 5% of marine manufacturers for rapid order fulfillment.

COMPANY WIDE SUPPORT

Direct phone technical support access to every Blue Sea Systems manager and engineer to guarantee your satisfaction with our product in your boat's electrical system.

GUARANTEED PERFORMANCE

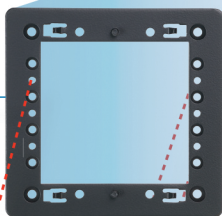
Blue Sea Systems stands behind its products for as long as you own them. Customers deserve reliable, well built products that will last in harsh environments.

MEMBER OF:



1 CHOOSE FRAME SIZE

Open frame allows future replacement or upgrade of panel modules



1 x 1
2 x 1
3 x 1
4 x 1
5 x 1

Snap on header

Module

Snap on footer



1 x 2 Panel
2 x 2 Panel
3 x 2 Panel
4 x 2 Panel
5 x 2 Panel

1 x 3 Panel
2 x 3 Panel
3 x 3 Panel
4 x 3 Panel
5 x 3 Panel

1 x 4 Panel
2 x 4 Panel
3 x 4 Panel
4 x 4 Panel
5 x 4 Panel

1 x 5 Panel
2 x 5 Panel
3 x 5 Panel
4 x 5 Panel
5 x 5 Panel

2 CHOOSE MODULES



Vessel Systems Monitor

NEW



P12 Battery Charger Remote Display



Digital Meter



Analog Meter



2 Inch Gauge



DIN Meter



M-Series Battery Switch

NEW



M-ACR Automatic Charging Relay

NEW



M-LVD Low Voltage Disconnect



Circuit Breakers



Bilge Pump



285-Series Circuit Breakers



Push Button Circuit Breakers with Rocker Switches



Push Button Circuit Breakers



Medium Duty Push Button Circuit Breakers



Residual Current Circuit Breaker



Rotary Switch Source Selection



European RCBO Mount



Sockets



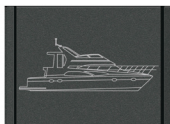
Socket, Dual USB Charger



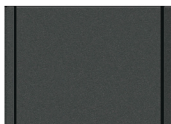
120V AC Dual Outlet



Battery Management



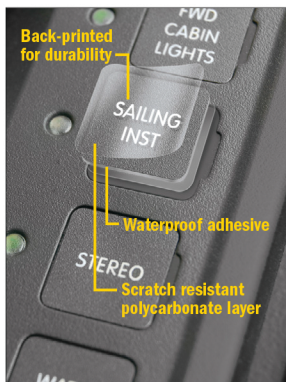
Pad Printed Blank



Blank

3 CHOOSE LABELS AND CIRCUIT BREAKER AMPERAGES

Blue Sea Systems offers over 500 standard labels as well as custom labels. Custom labels can be ordered in any language and are printed on our in-house label printer. Square Format Custom Labels are limited to three lines of eight characters each.



Circuit Status LEDs and backlit labels aid low-light readability

Blue Sea Systems labels are made using a scratch resistant polycarbonate material, waterproof adhesive, and are back-printed for durability.

Blue Sea Systems offers a broad selection of AC and DC circuit breakers:



Flat Rocker circuit breakers reduce the risk of accidental switching



Black Toggle circuit breakers offer traditional styling



Push Button Reset-Only circuit breakers provide high-density, low cost circuit protection

FRAME DIMENSION TABLE

Rows x Columns	Panel Height in (mm)	Panel Width in (mm)	Cut out Height in (mm)	Cut out Width in (mm)
1 x 1	4.75 (120.65)	4.88 (123.83)	3.31 (84.07)	4.38 (111.13)
2 x 1	7.75 (196.85)	4.88 (123.83)	6.31 (160.27)	4.38 (111.13)
3 x 1	10.75 (273.05)	4.88 (123.83)	9.31 (236.47)	4.38 (111.13)
4 x 1	13.75 (349.25)	4.88 (123.83)	12.31 (312.67)	4.38 (111.13)
5 x 1	16.75 (425.45)	4.88 (123.83)	15.31 (388.87)	4.38 (111.13)
1 x 2	4.75 (120.65)	9.25 (234.95)	3.31 (84.07)	8.75 (222.25)
2 x 2	7.75 (196.85)	9.25 (234.95)	6.31 (160.27)	8.75 (222.25)
3 x 2	10.75 (273.05)	9.25 (234.95)	9.31 (236.47)	8.75 (222.25)
4 x 2	13.75 (349.25)	9.25 (234.95)	12.31 (312.67)	8.75 (222.25)
5 x 2	16.75 (425.45)	9.25 (234.95)	15.31 (388.87)	8.75 (222.25)
1 x 3	4.75 (120.65)	13.63 (346.08)	3.31 (84.07)	13.13 (333.38)
2 x 3	7.75 (196.85)	13.63 (346.08)	6.31 (160.27)	13.13 (333.38)
3 x 3	10.75 (273.05)	13.63 (346.08)	9.31 (236.47)	13.13 (333.38)
4 x 3	13.75 (349.25)	13.63 (346.08)	12.31 (312.67)	13.13 (333.38)
5 x 3	16.75 (425.45)	13.63 (346.08)	15.31 (388.87)	13.13 (333.38)
1 x 4	4.75 (120.65)	18.00 (457.20)	3.31 (84.07)	17.50 (444.50)
2 x 4	7.75 (196.85)	18.00 (457.20)	6.31 (160.27)	17.50 (444.50)
3 x 4	10.75 (273.05)	18.00 (457.20)	9.31 (236.47)	17.50 (444.50)
4 x 4	13.75 (349.25)	18.00 (457.20)	12.31 (312.67)	17.50 (444.50)
5 x 4	16.75 (425.45)	18.00 (457.20)	15.31 (388.87)	17.50 (444.50)
1 x 5	4.75 (120.65)	22.38 (568.33)	3.31 (84.07)	21.88 (555.63)
2 x 5	7.75 (196.85)	22.38 (568.33)	6.31 (160.27)	21.88 (555.63)
3 x 5	10.75 (273.05)	22.38 (568.33)	9.31 (236.47)	21.88 (555.63)
4 x 5	13.75 (349.25)	22.38 (568.33)	12.31 (312.67)	21.88 (555.63)
5 x 5	16.75 (425.45)	22.38 (568.33)	15.31 (388.87)	21.88 (555.63)



Scan to go directly to
Blue Sea Systems
Panel Wizard at
panelwizard.blueseasystems.com



425 Sequoia Drive
Bellingham, WA 98226 USA
p 360.738.8230
p 800.222.7617 USA and Canada
f 360.734.4195
conductor@blueseasystems.com
www.blueseasystems.com

Order 20005 for a 20 pack of this guide
© Copyright 2014 Blue Sea Systems, Inc.

980011080 Rev. 003