



**EOS® BIKE  
LED BIKE LIGHT AND HEADLAMP**  
Operating and Maintenance  
Instructions  
Notice d'utilisation et d'entretien  
Bedienungsanleitung

**ENGLISH**

**Battery Installation**

See Battery Installation Diagram

- 3 AAA**
- Alkaline (LR03)
  - Lithium (L92)
  - Rechargeable NiCad or NiMH

Princeton Tec cares about the environment and recommends recycling batteries. For more information about battery recycling, please go to: [www.batteryrecycling.com](http://www.batteryrecycling.com)

Observe proper battery polarity when installing the batteries. Improper installation of the batteries will damage the light and void the warranty.

**WARNING** ⚠

- Never mix fresh and used batteries.
- Never mix different battery brands or chemistry types.
- Always remove drained batteries immediately.
- Remove batteries during long periods of storage.

NOTE: Lithium batteries offer extended constant brightness time, extreme cold weather performance, and are lighter weight. Rechargeable NiCad or NiMH batteries may result in reduced brightness due to lower nominal voltage.

The Eos battery compartment has a waterproof seal. It is important to keep this seal free from dirt and away from harsh chemicals in order to preserve waterproof integrity. Inspect the seal every time batteries are changed. If dirt is present, wipe gently with a damp cotton swab and mild soap until dirt is removed.

NOTE: Some battery types can emit hydrogen gas, which can create an explosion potential in sealed devices if it is not vented or removed. The Eos is equipped with a platinum catalyst to remove this gas. Upon severe impact, the catalyst could fracture. If you notice a rattling sound in the headlamp or gray particles in the battery compartment, do not use the headlamp. See the warranty and return policy for more information.

**Switch Operation – See Switch Operation diagram**

Modes (High, medium, low, and flash) are selected by pressing and releasing the button within 1.5 seconds of the previous button press.

There are two ways to turn the Eos off. You can cycle through the modes until you reach off or if more than two seconds has passed since the previous button press the next press of the button will turn the light off.

**Circuitry and Power Consumption / Regulated Leds**

The Eos uses a sophisticated current-regulating circuit that maintains initial brightness as long as the batteries have sufficient voltage.

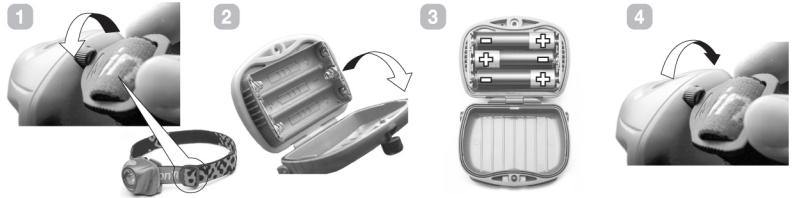
**Handlebar Instillation - See instillation diagram**

To install on handlebars, use the enclosed rubber shims. For 18.5mm to 20mm bar use both shims. For 22mm to 23mm bar use 1/8" thick shim. For 24mm to 26mm use 1/16" thick shim.

**Battery Installation**

**Mise en place des piles**

**Einlegen der Batterien**



**Operation**

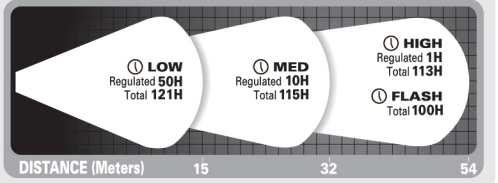
**Fonctionnement**

**Betrieb**



press 1x = High  
press 2x = Med  
press 3x = Low  
press 4x = Flash

Maxbright  
1 Watt LED

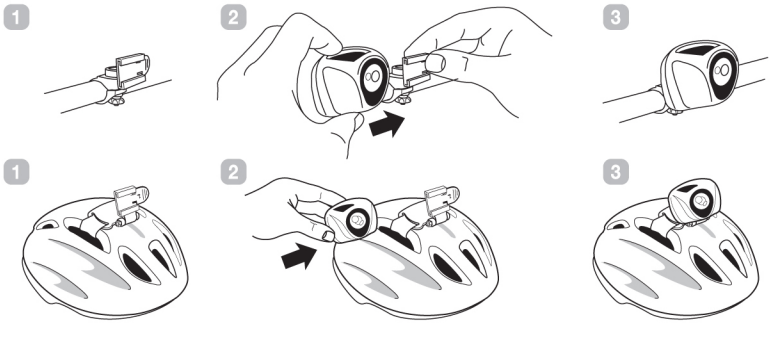


\* Princeton Tec calculates total burn time as the time it takes for the light source to produce a minimum of 0.25 lux at 2 meters. 0.25 lux is about the equivalent of a full moon on a clear night. Regulated burn time is less than overall burn time.

\* Princeton Tec définit la durée totale d'éclairage comme le temps nécessaire à la source lumineuse pour produire un minimum de 0,25 lux à 2 mètres. 0,25 lux équivaut à peu près à la luminosité d'une pleine lune dans un ciel nocturne dégagé. La durée d'éclairage régulé est inférieure à la durée d'éclairage globale.

\* Princeton Tec berechnet die Gesamtbrenndauer bezogen auf eine von der Stirnlampe erzeugte minimale Beleuchtungsstärke von 0,25 Lux in 2 Meter Abstand. 0,25 Lux entsprechen in etwa der Beleuchtungsstärke des Vollmonds in einer klaren Nacht. Die regulierte Brenndauer ist geringer als die Gesamtbrenndauer.

**Installation**



**Helmet Instillation - See instillation diagram**

To install on helmet, remove elastic head strap and replace with enclosed velcro. Strap through vents in helmet as shown.

**Troubleshooting**

If the Eos fails to light:

- Check the batteries for proper installation.
- Replace batteries if proper installation is confirmed.
- Check circuit board for water (the seal may have been compromised by improper rear cover installation). The light will resume normal operation once the water is shaken or blown out and the light is left open until completely dry. If the light has been contaminated with salt water, flush the unit with fresh water and dry as described above.

**USA Lifetime Warranty - International 10-Year Warranty**

Due to international regulations, Princeton Tec's lifetime warranty can only be offered to customers in the USA. Princeton Tec offers a 10-year warranty to our customers outside the USA. FULL WARRANTY - Princeton Tec warrants this product to be free from defects in workmanship and materials under normal use for as long as you own this product. This warranty covers all of the component parts of the product except batteries. This warranty does not cover deterioration due to normal wear or damage due to misuse, alteration, negligence, accidents, or unauthorized repair. Princeton Tec will repair or replace parts which are defective in workmanship or materials. Your authorized Princeton Tec Dealer and Princeton Tec are the only facilities authorized to repair the product.

After (3) unsuccessful attempts to repair the product, you have the right to elect replacement of the product or a refund of the purchase price less allowance for use of the product. NO INCIDENTAL OR CONSEQUENTIAL DAMAGES ARE INCLUDED IN THIS WARRANTY. (Some states do not allow the exclusion or limitation of incidental or consequential damages, so the above limitations or exclusions may not apply to you.)

This warranty gives you specific legal rights, and you may also have other rights which vary from state to state.

Princeton Tec reserves the right to change product specifications without notice.

**Return Policy**

If your light fails to operate, follow these simple steps:

- 1) Check batteries. Replace if necessary.
- 2) Contact Princeton Tec customer service at 800-257-9080 to request an RMA number to send your light in for repair or replacement. No warranty repairs will be accepted without an RMA number.
- 3) Return the light without batteries to: Princeton Tec, 5198 Rt. 130, Bordentown, NJ 08505. Postage due and freight collect items will not be accepted.

Princeton Tec  
PO Box 8057,  
Trenton, NJ 08650  
Phone: 609-298-9331  
Fax: 609-298-9601  
[www.princetontec.com](http://www.princetontec.com)  
© 2008 Princeton Tec

