

CHIRP-READY



TM165HW Wide-Beam Transducer

600 W Transom-Mount

Maximize the coverage under your boat and see what you've been missing. The new TM165HW features a high frequency range of 150-250 kHz and a super wide 30° average beamwidth, providing maximum coverage across the frequency band. In addition to improving the performance of Chirp-capable fishfinders, anglers using this new wide beam transducer will achieve three times the coverage under the boat compared to our current high frequency Chirp-ready transducers such as B75H.

Wide beamwidth, together with the high frequency range, provides vast bottom coverage and precise fish detection in the upper water column that can sometimes go unseen with a narrow beam transducer. Airmar's new wide beam format also creates crisper and larger return images on the display.



Features

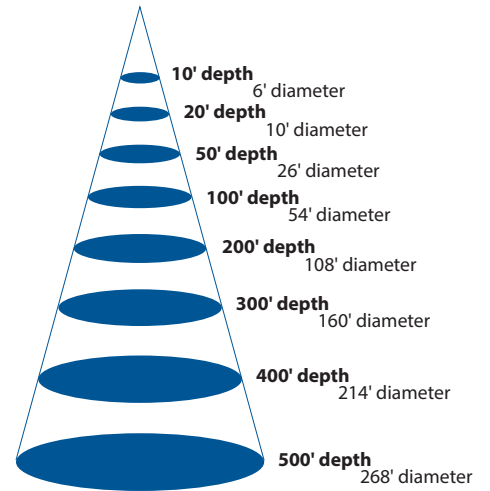
- Depth & fast-response water-temperature sensor
- 600 W with a maximum depth of 500 ft (152 m)
- High frequency: 150 kHz to 250 kHz, with a super wide 30° average beamwidth
- Covers popular fishing frequency of 200 kHz plus everything else in the bandwidth
- 100 kHz of total bandwidth from one transducer
- High frequency provides superior shallow water performance, bottom detail and fish target separation.
- Wide beamwidth gives superior coverage under the boat.
- High-performance, low profile design provides excellent resolution at speed when installed properly.
- Features a plastic transom bracket and hardware
- Recommended boat size: Up to 25 ft (8 m)
- Recommended for planing hulls made from fiberglass, metal or wood
- Exclusive Xducer ID® technology
- Weight: 1.1 lb (0.5 kg)

AIRMAR® ...ACHIEVE SONAR SUPERIORITY

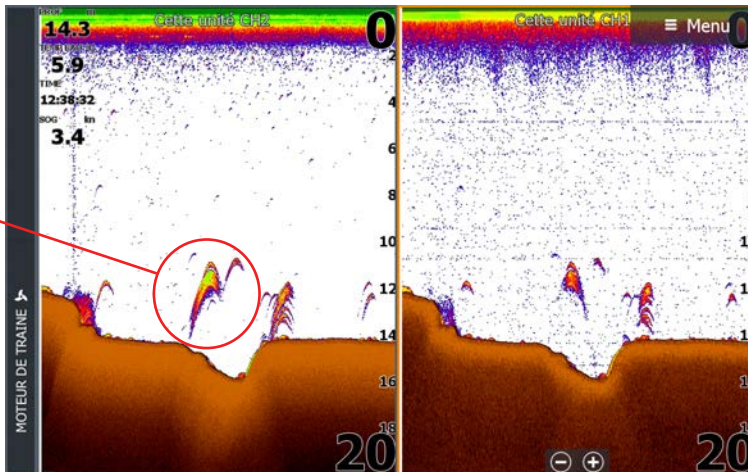
 **AIRMAR®**
TECHNOLOGY CORPORATION

High-Wide Chirp Beats Standard Sonar for Definition and Coverage

Depth	Beam Coverage – 30°	
	TM165HW	
10 ft	6 ft (1.8 m)	
20 ft	10 ft (3 m)	
50 ft	26 ft (7.9 m)	
100 ft	54 ft (16.4 m)	
200 ft	108 ft (32.9 m)	
300 ft	160 ft (48.7 m)	
400 ft	214 ft (65.2 m)	
500 ft	268 ft (81.6 m)	



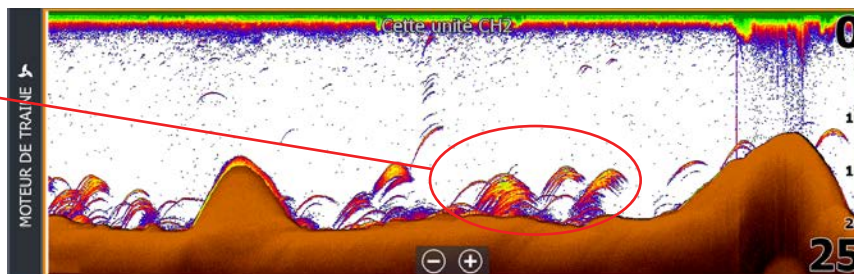
Better Target Separation and Definition



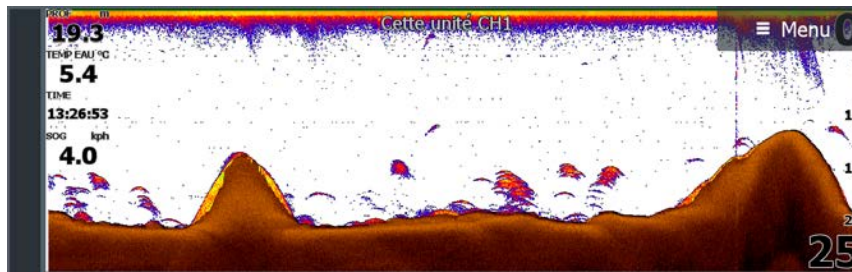
Chirp High Wide

Standard Sonar

Wider Coverage = More Targets!



Chirp High Wide



Standard Sonar

www.airmar.com

©Airmar Technology Corporation

TM165HW_TRANSOMMOUNT_EMEA_rB 04/12/19

As Airmar constantly improves its products, all specifications are subject to change without notice. All Airmar products are designed to provide high levels of accuracy and reliability, however they should only be used as aids to navigation and not as a replacement for traditional navigation aids and techniques. Other company or product names mentioned in this document may be trademarks or registered trademarks of their respective companies, which are not affiliated with Airmar.

