



HIGH-PERFORMANCE MULTIFUNCTION NAVIGATION DISPLAYS



Raymarine®





## A NEW GENERATION OF HIGH-PERFORMANCE MULTIFUNCTION NAVIGATION DISPLAYS

The performance-tuned Axiom Plus is a new generation of award-winning Raymarine multifunction displays. Optimized for speed, Axiom Plus is equipped with a powerful quad-core processor for industry-leading responsiveness and speed, giving you the power to seamlessly redraw charts, navigate with augmented reality, and experience RealVision™ 3D sonar. New, higher resolution IPS displays deliver 25 percent more brightness and new day/night color palettes offer enhanced visibility in any lighting condition. Axiom Plus features the renowned LightHouse 3 OS, the most powerful and easy-to-use Raymarine MFD operating system to date.





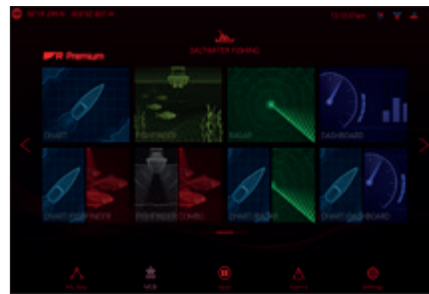
# PERFORMANCE TUNED

Designed for speed, responsiveness, and future expansion.



## FAST AND FLUID

Fluid and fast chart redraw of new Raymarine LightHouse Charts, plus Navionics and C-MAP.



## LIGHTHOUSE 3 OS

Smart and intuitive LightHouse 3 OS makes navigating easy.



## QUAD-CORE POWER

Powerful quad-core processor, plus increased onboard storage for personal data and apps.



## AUGMENTED REALITY

ClearCruise™ Augmented Reality-capable for smarter navigation decisions.





# NEW LIGHTHOUSE CHARTS

Ready-to-explore with new Raymarine LightHouse Charts, featuring dynamic viewing options, premium points of interest, and detailed satellite imagery.



Information rich, leisure chart view



Professional government chart view

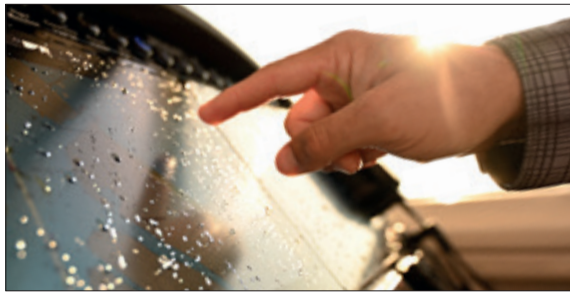


Mapbox® Aerial Satellite Overlays with a LightHouse Premium subscription



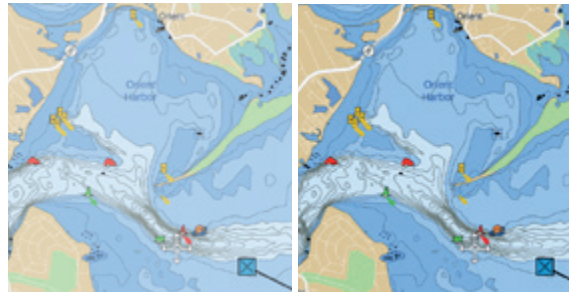
## MAXIMUM VISIBILITY

Upgraded IPS display technology delivers charts, sonar, radar, and video in stunning color.



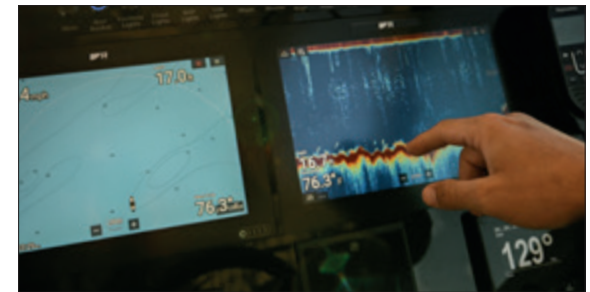
### HYDROTOUGH™ DISPLAY

Nano-coated, impact-resistant glass screen repels water, oil, and smudges for better viewing and accurate touch controls.



### BRIGHTER

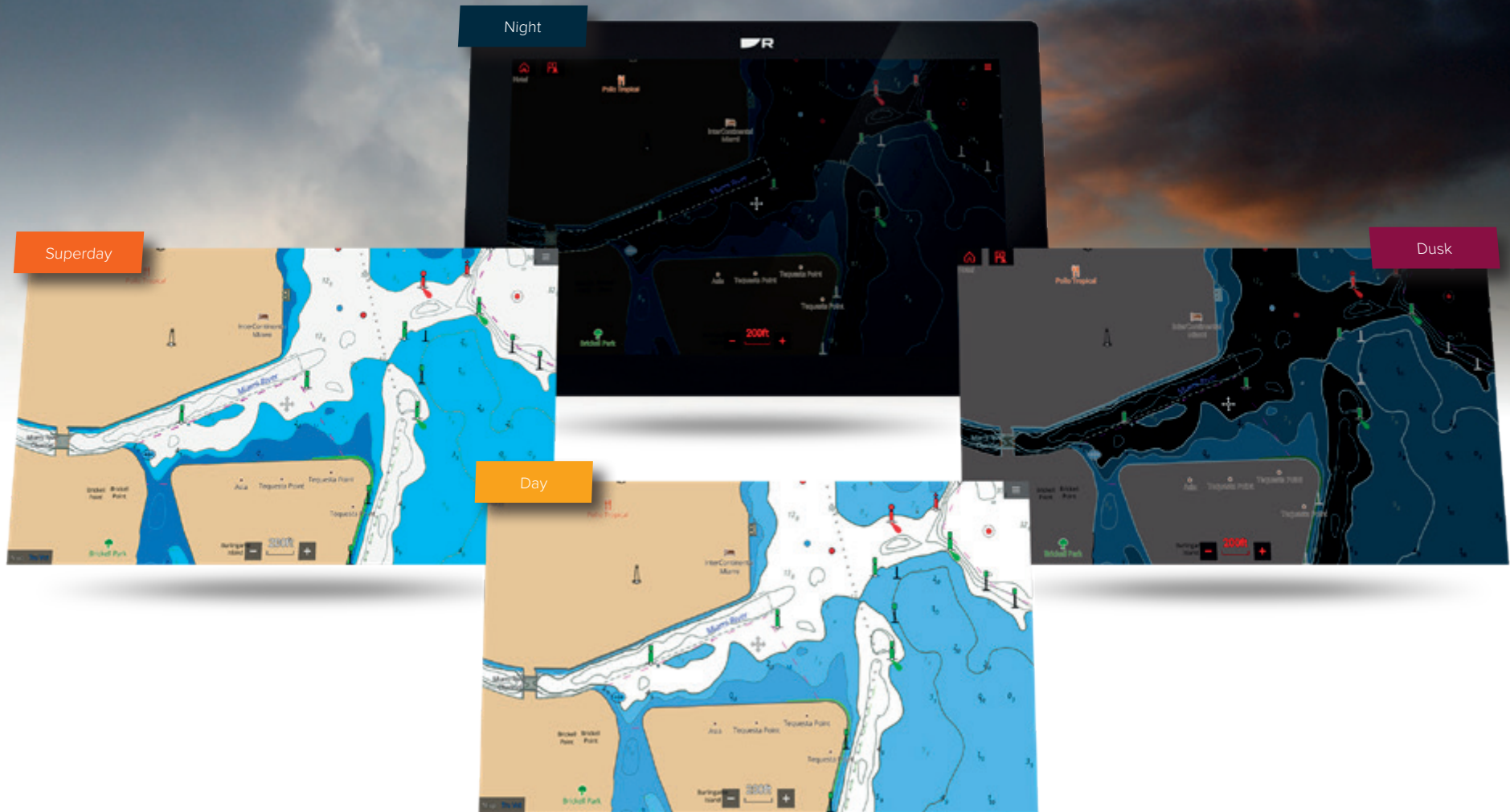
7, 9, and 12 inch all-weather displays are 25 percent brighter (up to 1,800 nits).



### SHARPER

IPS display technology delivers wider viewing angles and sharp contrast at twice the resolution of traditional displays.





Improved viewing with new LightHouse color themes, including Day, Super Day, Dusk, and Night mode



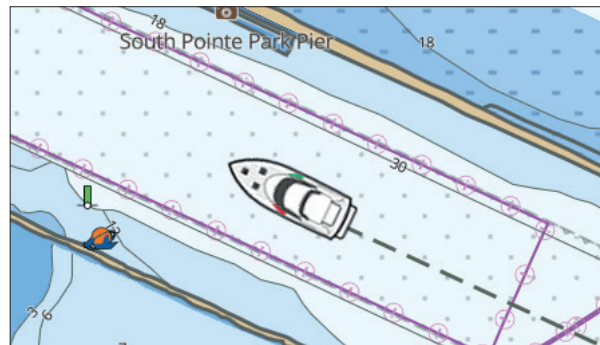
## **SIMPLY** POWERFUL

Better chart plotting, enhanced GPS, and 3D sonar.



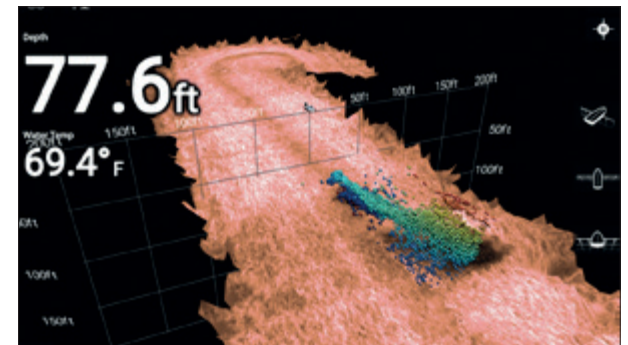
### **READY TO EXPAND**

Network with multiple Axiom displays, radars, sonar, and more.



### **ENHANCED GPS**

Next-generation, high-performance 10 Hz GPS/GNSS receiver with 4X increased sensitivity for accurate positioning



### **3D SONAR BUILT-IN**

Available with built-in RealVision 3D sonar for the most comprehensive view of the underwater world.



# KEY AXIOM + SPECIFICATIONS

	AXIOM + 7	AXIOM + 9	AXIOM + 12
<b>Display size</b>	7.0 inch High Density IPS	9.0 inch High Density IPS	12.1 inch High Density IPS
<b>Display Resolution</b>	1024 x 600 (WSVGA)	1280 x 720	1280 x 800 (WXGA)
<b>Display Type</b>	Multitouch with NanoTough™ rugged hydrophobic coating		
<b>Brightness</b>	up to 1,500 nits		up to 1,800 nits
<b>Viewing Angle</b>	85° top, bottom, left, right		88° top, bottom, left, right
<b>Dimensions</b>	210 x 142 x 77mm / 7.92" x 5.24" x 3.00"	244 x 158 x 77mm / 9.65" x 6.22" x 3.00"	314 x 217 x 77mm / 12.36" x 8.54" x 3.00"
<b>Weight</b>	3 lbs	5 lbs	6.5 lbs
<b>Mounting</b>	Top, Flush, Front, Bracket		
<b>Waterproof Rating</b>	IPx6 and IPx7		
<b>Operating Temperature</b>	-25°C to + 55°C (-13°F to 131°F)		
<b>Voltage</b>	12V DC (8 V to 16 VDC)		
<b>Connectivity and Ports</b>	Transducer (RV models only), NMEA 2000 (DeviceNet) and SeaTalk NG via adapter, RayNet Ethernet, USB Micro B, MicroSD card reader, Wi-Fi (802.11/b/g/n) and Bluetooth V4.0		

## Raymarine UK Limited

Marine House  
Cartwright Drive  
Fareham  
PO15 5RJ,  
United Kingdom  
T: (+44) (0)1329 246 700

## FLIR Maritime US Inc.

9 Townsend West  
Nashua NH 03063  
United States of America  
T: (+1) 603-324-7900

## FLIR Maritime Belgium Bvba

Luxemburgstraat 2  
2321 Meer  
Belgium  
T: (+32) (0) 3665 5162

## Content Note

The technical and graphical information contained in this brochure, to the best of our knowledge, was correct as it went to press. However, the Raymarine policy of continuous improvement and updating may change product specifications without prior notice. Therefore, unavoidable differences between the product and this brochure may occur from time to time, for which liability cannot be accepted by Raymarine.

Some images in this brochure have been used for illustration purposes only.

## Photography:

Jason Arnold; Dufour; Boston Whaler; Carter Andrews

19-2990-MAR APRIL 2020 (USA)

