



## MODELS 55-0407AL, 55-0410, 55-0416

### ADJUSTABLE ALUMINUM BRACKET DESIGNED FOR AUXILIARY MOTORS



#### 55-0407

Rated for auxiliary motors up to 15 hp

Vertical travel : 10 inches [25.4 cm]

Setback up: 8-3/4 inches [22.23 cm]

Setback down: 14 inches [35.56 cm]

Motor Mount Plate dimensions: 11.5 wide x 10.75 high [inches]  
29.21 wide x 27.31 high [cm]

Product weight 20 lbs. [9.07 kg]

#### 55-0410 [features x-heavy springs]

Rated for auxiliary motors up to 35 HP

Vertical travel : 10 inches [25.4 cm]

Setback up: 8-3/4 inches [22.23 cm]

Setback down: 14 inches [35.56 cm]

Motor Mount Plate dimensions: 11.5 wide x 10.75 high [inches]  
29.21 wide x 27.31 high [cm]

Product weight 20 lbs. [9.07 kg]

#### 55-0416 [features x-heavy springs]

Rated for auxiliary motors up to 35 HP

Vertical travel : 16 inches [40.64 cm]

Setback up: 8-3/4 inches [22.22cm]

Setback down: 18inches [35.56 cm]

Motor Mount Plate: 11.5 wide x 12.5 high [inches]  
29.21 wide x 31.75high[ cm]

Product weight 20 lbs. [9.07 kg]



# Adjustable Auxiliary Outboard Motor Bracket mounting and operating instructions for the following products only:

**55-0407AL, 55-0410, 55-0416**

## AUXILIARY OUTBOARD MOTOR BRACKET CAUTION GUIDELINES

1. **Always** remove your motor from bracket when trailer-  
ing. Failure to do so may result in damage to boat, motor, or  
bracket.
2. Do not exceed the stated H.P. rating.
3. Verify that the motor clamps are tight before every use.
4. **You must always use a safety cable when operating your motor.**
5. Operate motor at low speed. Avoid turning motor at full throttle. Refrain from sharp turns.
6. Operate your motor in lowest position possible for best performance.
7. Raise and tilt motor **ONLY** when motor is **NOT** in use or running.
8. Do not alter the motor mounting plate or bracket in any way.
9. Occasional greasing of the pivoting bolts will provide a smoother operation of the bracket.
10. To avoid personal injury, do not contact moving parts and observe all of the above guidelines.
11. Do not attempt to remove or replace springs.

Different Panther brackets have varying amounts of  
“travel”, be sure you have selected the proper bracket  
for your application.

Panther Bracket Model	Vertical Travel
55-0407AL	10"
55-0410	10"
55-0408SS	11"
55-0416	16"

## INSTALLATION

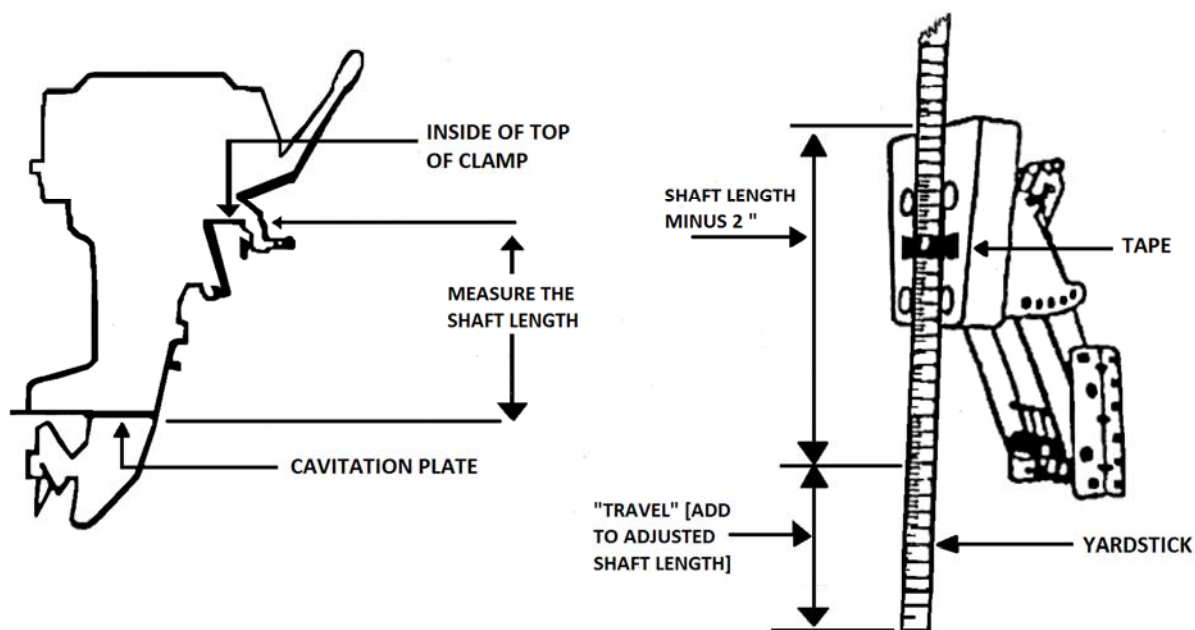
Measure the distance from inside the top of the motor clamp to the cavitation plate. This is the “shaft length”. Subtract 2” from this measurement, this gives you the “adjusted shaft length”. Now add the amount of travel your bracket has. In the case of Model 55-0407AL the travel is 10”.

Most kicker motors have a 20” shaft. In this case, the math would be  $20 - 2 = 18$ . You then add 10 to represent the bracket’s travel, so your total is 28. Take a yard stick [you could use any stick with 28” measured on to it] and tape it to the motor bracket so that the 28” mark is at the top of the motor mount plate.

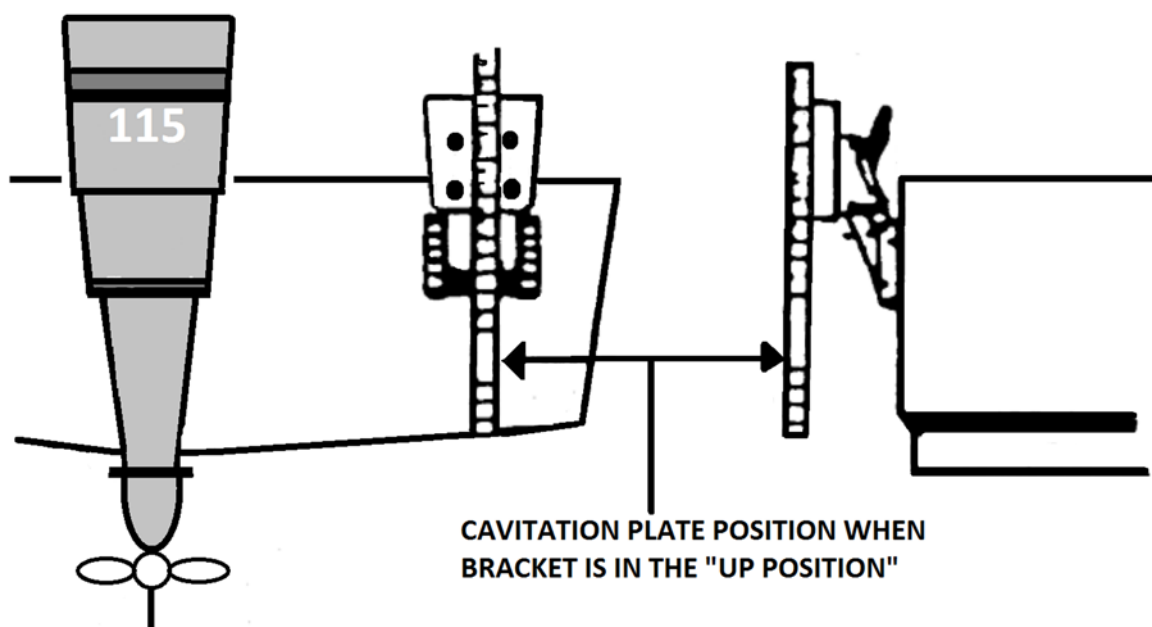
**If your kicker motor has a different shaft length, or if your bracket has a different amount of travel, adjust the numbers accordingly!**

When your kicker motor is deployed, the cavitation plate must be at or slightly below the bottom of the boat relative to the center point of the bracket. Now position the bracket on the transom so the bottom of the yardstick is where the cavitation plate needs to be. Have a helper mark four holes for the attachment of the bracket to the boat. The primary holes to be used are the extreme top and bottom holes on each side of the mounting bracket. In the event of obstructions on the inside of the transom, alternative holes are provided. Always use the holes closet to the top and bottom of the bracket as possible.

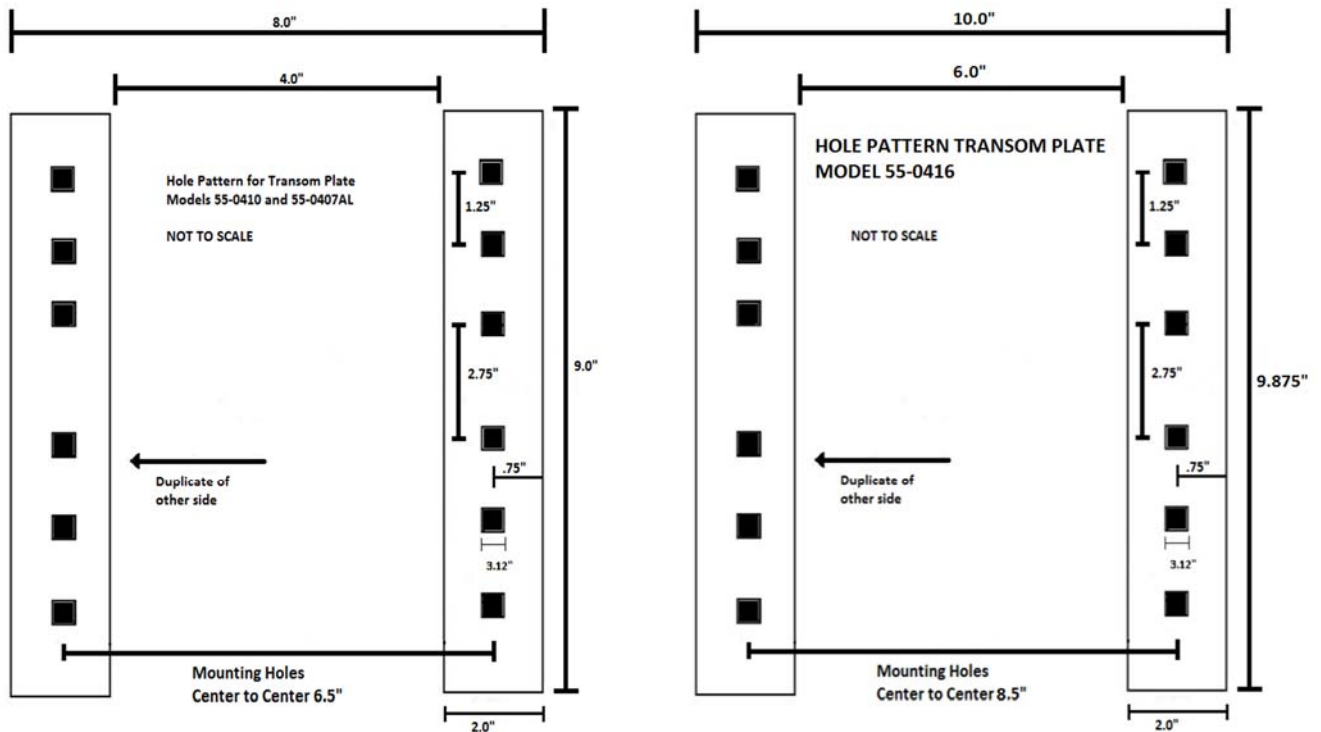
DRAWINGS NOT TO SCALE



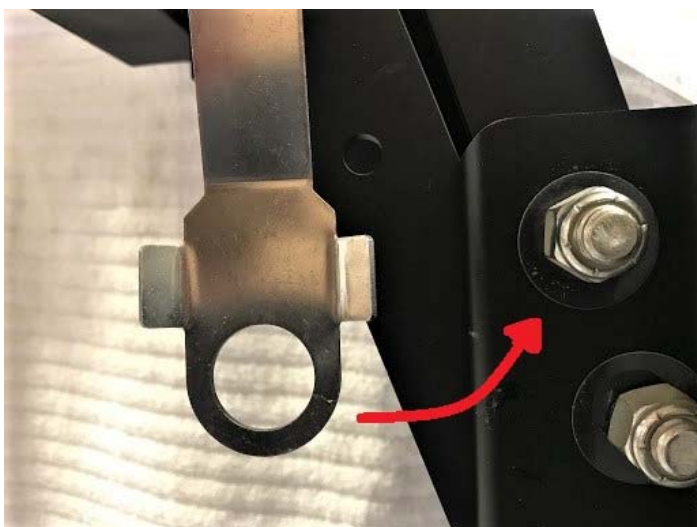
Once you have your measuring stick in place, position the outboard motor bracket on the transom of the boat on either the starboard or port side. Care should be exercised to make sure that the bracket will not interfere with the movement of the existing engine or a rudder.



Check again to make sure that there are no obstructions on the inside of the transom and then drill four 3/8" holes at the marked locations. Apply a bead of RTV silicone sealant around each hole to ensure a waterproof seal. Attach the outboard bracket to the transom with 5/16" stainless steel fasteners [not included]. For transoms that are 2" or less in thickness a backing plate should be used. When tightening the locking nuts on the attachment bolts, there should be at least two threads of the bolts protruding through the nut to insure good locking characteristics.



Trim adjustment should now be made to insure that the engine's cavitation plate is parallel to the bottom of the boat. While standing on either side of the boat, sight down the boat bottom and compare with the plane of the cavitation plate. If adjustment is necessary, try moving the engine's built-in trim adjustment pin, it will probably have around five positions to try.



### SAFETY LATCH

On the starboard side of the bracket you will find a safety latch. This is designed to keep the bracket's motor plate from bouncing while you are out on the water. To engage the safety latch, simply slip it over the large nut. You may have to bend it slightly to get it positioned. Make sure the safety latch is not engaged when you deploy the motor.

# SERVICE AND WARRANTY

Should your unit ever require service, **please do not return the product to your dealer.** Please call the number below for special instructions on shipping and handling. Please call between 9:00 am - 3:00 pm (Central Standard Time) Monday through Friday. If service is required and covered by warranty, it will be repaired or replaced as described below. If service is required and not covered by warranty, (such as damage caused from improper trailering or from water intrusion through the breather tube), replacement parts are available for purchase and may be paid for by credit card

The warranty coverage on this equipment is limited to the terms set forth below:

MarineTech Products, Inc. warrants this product to be free of defects in material and workmanship for a period of ONE (1) YEAR from the date of original retail purchase. **Positive proof of date of purchase is required for warranty service.** If service is required and covered by warranty, the unit will be repaired or replaced with new or factory rebuilt parts at no charge. The defective components must be returned to the address specified, with shipping charges prepaid. Be sure to include your name, address, telephone number and a copy of the sales receipt showing the date of original retail purchase. All sales receipts are subject to verification.

This warranty does not apply if the unit has been damaged by accident, abuse, misuse, poor installation or misapplication, or if it has been modified from its original condition, or if any serial number has been removed or defaced or altered. **This warranty does not cover any expense to remove or reinstall the unit or any of its components.** If a returned unit is not covered by warranty, the sender will be notified and given an estimate of the charges to repair or replace the unit, together with the return shipping charges.

THIS WARRANTY DOES NOT COVER SPECIAL, INCIDENTAL, OR CONSEQUENTIAL DAMAGES RESULTING FROM ANY BREACH OF WARRANTY, OR UNDER ANY OTHER LEGAL THEORY, INCLUDING BUT NOT LIMITED TO DAMAGE TO OR REPLACEMENT OF OTHER EQUIPMENT AND PROPERTY. THE WARRANTY AND REMEDIES SET FORTH ARE EXCLUSIVE AND IN LIEU OF ALL OTHERS, WHETHER ORAL OR WRITTEN, EXPRESS OR IMPLIED. DUE TO THE SPECIAL AND UNIQUE CONDITIONS THAT MAY EXIST IN EACH APPLICATION, THE MANUFACTURER SPECIFICALLY DISCLAIMS ANY AND ALL IMPLIED WARRANTIES OF MERCHANTABILITY AND FITNESS FOR A PARTICULAR PURPOSE. NO DEALER, AGENT OR EMPLOYEE IS AUTHORIZED TO MAKE ANY MODIFICATION, EXTENSION OR ADDITION TO THIS WARRANTY.

Some states do not allow exclusion of incidental or consequential damages, so the above exclusions may not apply to you. This warranty gives you specific legal rights, and you may also have other legal rights, which may vary from state to state.

**FOR SERVICE :**

**send an email to**

**[info@marinetechproducts.com](mailto:info@marinetechproducts.com)**

**or call 651.486.2010**

**MARINETECH PRODUCTS, INC**

1360 East County Road E

VADNAIS HEIGHTS, MN 55110

MarineTech Products, Inc. is proud to offer these lines:



*SOLUTIONS FOR MOTOR MOUNTING, REMOTE STEERING, TILT & TRIM, SHALLOW WATER ANCHORS, AND SECURITY SYSTEMS*



*ROD HOLDERS, TROLLING MOTOR SUPPORTS, AND GPS/SONAR MOUNTS*



*AUXILIARY OUTBOARD MOTOR STEERING SYSTEMS*



*THROTTLE CONTROL FOR GAS POWERED AUXILIARY MOTORS*

[www.marinetechproducts.com](http://www.marinetechproducts.com)