

NEW

# GPSMAP® X3 SERIES



010-02365-01 | 743  
010-02365-03 | 743xsv



010-02366-01 | 943  
010-02366-03 | 943xsv



010-02367-01 | 1243  
010-02667-03 | 1243xsv

Boasting more pixels and processing power than previous-generation GPSMAP devices, these fast, responsive touchscreen units offer seamless network integration and support for traditional and scanning sonar capabilities<sup>1</sup>, J1939 engine connectivity, OneHelm™ digital switching and more.



J1939 ENGINE  
CONNECTIVITY

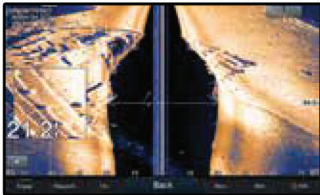
ONEHELM DIGITAL SWITCHING  
CAPABILITIES

AVAILABLE WITH BLUECHART® G3 AND  
LAKEVÜ G3 CARTOGRAPHY WITH AUTO  
GUIDANCE TECHNOLOGY<sup>2</sup>

XSV MODELS INCLUDE BUILT-IN  
SUPPORT FOR THE FULL SUITE OF  
GARMIN SONAR OPTIONS<sup>2</sup>

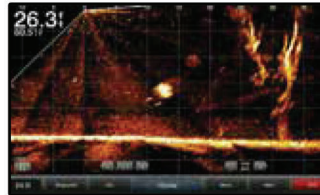


## ULTRA HIGH-DEFINITION SONAR



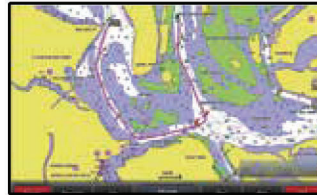
Offers built-in support for the Ultra High-Definition scanning sonar system; no black box needed.

## PANOPTIX LIVESCOPE™



Supports all Panoptix™ sonar, including Panoptix LiveScope™ System and Panoptix LiveScope™ LVS12. (sold separately).

## BLUECHART G3 CHARTS



Highly detailed maps and cartography featuring Navionics® data and Auto Guidance technology<sup>2</sup>.

## NMEA 2000® AND NMEA 0183 NETWORKS



Connect with autopilots, Fusion-Link™ audio system and engine data.

## ADDITIONAL SERIES FEATURES

Bright, easy-to-use, sunlight-readable displays have more pixels than previous-generation GPSMAP touchscreens for ultra-sharp visibility from any angle

Slimline display borders, edge-to-edge glass and reduced unit footprint make for easy retrofit in a wider range of dash configurations

Easily build your marine system — from compatible sonar and autopilots to compatible radar, cameras and multimedia — using NMEA 2000® and NMEA 0183 network connectivity and the Garmin Marine Network

Use the exclusive OneHelm™ feature to connect to many third-party devices for full control of your boat on your chartplotter screen

Use built-in Wi-Fi® networking to pair with the free ActiveCaptain® app<sup>3</sup> for access to OneChart™, smart notifications, software updates and more

Integrated ANT® technology support for use with your compatible quatrix® marine smartwatches, gWind™ Wireless 2 transducer, GNX™ Wind marine instrument and wireless remote controls

Built-in Garmin SailAssist™ features, including laylines, race features, set and drift, wind data and more

Compatible with Force™ trolling motor for full control of the motor from the chartplotter screen, plus the ability to route to waypoints, follow tracks and more

<sup>1</sup>Available with or without included transducer

<sup>2</sup>Auto Guidance is for planning purposes only and does not replace safe navigation operations

<sup>3</sup>Additional equipment (sold separately) and device pairing required

# Combos

GPSMAP 1242xsv/1242 and  
GPSMAP 1042xsv/1042



GPSMAP 1243xsv/1243 and  
GPSMAP 943xsv/943 and  
GPSMAP 743xsv/743



ECHOMAP Ultra  
106xs/106 and  
126xs/126



ECHOMAP UHD 94sv/93sv and  
ECHOMAP UHD 74sv/73sv & 74cv/73cv  
and ECHOMAP UHD 64cv/63cv

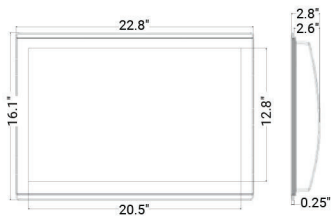


ECHOMAP Plus 64cv/63cv and 44cv/43cv

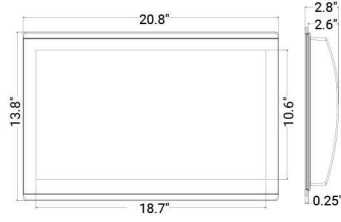


|  |  |   |   |   |  |
|--|--|---|---|---|--|
| Display Size (diagonal)                          | 12" (1242xsv/1242)<br>10" (1042xsv/1042)   | 12" (1243xsv/1243)<br>9" (943xsv/943)<br>7" (743xsv/743)  | 10" (106xs/106)<br>12" (126xs/126)  | 9", 7" and 6"   | 6.2" (64cv/63cv)<br>4.3" (44cv/43cv)                         |
| Display Type and Resolution (pixels)             | WXGA - 1280 x 800 (1242xsv/1242)<br>WSVGA - 1024 x 600 (1042xsv/1042)  | WXGA - 1280x800 (1243xsv/1243)<br>WXGA - 1280x720 (943xsv/943)<br>WSVGA - 1014x600 (743xsv/743)   | 1280 x 800  | WXGA - 800 x 480  | WXGA - 800 x 480 (64cv/63cv)<br>QVGA - 272 x 480 (44cv/43cv) |
| Touch- or Keyed Panel                            | Keyed  | Multitouch  | Keyed Assist Multitouch   | Keyed Assist Multitouch   | Keyed  |
| GPS Receiver                                     | 10 Hz GPS/GLONASS, internal  | 10 Hz GPS/GLONASS, internal   | 10 Hz   | 5 Hz GPS/GLONASS, internal  | 5 Hz GPS/GLONASS, internal                                   |
| Standard GPS Antenna                             | Internal (input for external)  | Internal (input for external)   | Internal (input for external)   | Internal (input for external)   | Internal (input for external)                                |
| Number of Waypoints                              | 5,000  | 5,000   | 5,000   | 5,000   | 5,000  |
| Number of Routes                                 | 100  | 100   | 100   | 100   | 100  |
| NMEA 2000® Compatible                            | Yes  | Yes   | Yes   | Yes   | Yes (64cv/63cv)  |
| NMEA 0183® Compatible                            | Yes  | Yes   | Yes   | Yes   | Yes  |
| Garmin Marine Network Compatible                 | Yes  | Yes   | Yes, with other 7" and 9" ECHOMAP UHD, ECHOMAP Plus and ECHOMAP Ultra models only | Yes, with other 7" and 9" ECHOMAP UHD, ECHOMAP Plus and ECHOMAP Ultra models only | No   |
| OneHelm  | No   | Yes   | No  | No  | No   |
| Preloaded Map                                    | BlueChart® g3 & LakeVü g3  | BlueChart® g3 & LakeVü g3   | BlueChart® g3 & LakeVü g3   | BlueChart® g3 & LakeVü g3   | BlueChart® g2 (64cv, 44cv)<br>LakeVü HD (63cv, 43cv)         |
| BlueChart® g3 Vision® Compatible                 | Yes  | Yes   | Yes   | Yes   | Yes  |
| Auto Guidance                                    | Yes  | Yes   | Yes   | When paired with a Vision or Ultra card   | When paired with a Vision or Ultra card                      |
| ActiveCaptain® Support                           | Yes  | Yes   | Yes   | Yes   | No   |
| SailAssist                                       | Yes  | Yes   | Yes   | Yes   | Yes (64cv/63cv only)   |
| Wi-Fi® Wireless Connectivity                     | Yes  | Yes   | Yes   | Yes   | Yes (64cv/63cv) No (44cv/43cv)                               |
| ANT® Wireless Connectivity                       | Yes  | Yes   | Yes   | No  | No   |
| GRID™ 20 (Garmin Remote Input Device) Compatible | Yes  | Yes   | No  | No  | No   |
| Wireless Remote Compatible                       | Yes  | Yes   | No  | No  | No   |
| FLIR® Camera Support                             | Yes  | Yes   | No  | No  | No   |
| Fusion-Link™ Support                             | Yes  | Yes   | Yes   | Yes   | Yes (64cv/63cv)<br>No (44cv/43cv)                            |
| Video Input/Output                               | 1 BNC  | 1 BNC<br>Video Output: 1 HDMI<br>1243xsv/1243   | No  | No  | No   |
| AIS and DSC Support                              | Yes  | Yes   | Yes   | Yes   | No (64cv/63cv)   |
| Traditional HD ID 77/200                         | Yes (xsv)  | Yes (xsv)   | Yes   | Yes   | Yes  |
| Traditional HD ID 50/200                         | Yes (xsv)  | Yes (xsv)   | Yes   | Yes   | Yes  |
| Traditional CHIRP                                | Yes (xsv)  | Yes (xsv)   | Yes   | Yes   | Yes  |
| CHIRP ClearVü                                    | Yes (xsv)  | Yes (xsv)   | Yes   | Yes   | Yes  |
| CHIRP SlideVü                                    | Yes (xsv)  | Yes (xsv)   | Yes   | Yes   | No   |
| Dual Channel CHIRP                               | No   | No  | No  | No  | No   |
| Ultra High-Definition scanning sonar             | No   | Yes   | Yes   | Yes   | No   |
| Optional Sonar Support                           | Yes  | Yes   | Yes   | No  | No   |
| Internal Sonar Sharing                           | Yes (xsv)  | Yes (xsv)   | Yes, with other 7" and 9" ECHOMAP Plus models and ECHOMAP Ultra models only       | Yes, with other 7" and 9" ECHOMAP UHD and ECHOMAP Ultra models only               | No   |
| Transmit Power                                   | 1 kW traditional, 1 kW CHIRP (xsv)   | 1 kW traditional, 1 kW CHIRP (xsv)  | 600 W   | Up to 500 W (RMS)   | Up to 500 W (RMS)  |
| Panoptix™ Support                                | Yes  | Yes   | Yes   | Yes   | No   |
| Preloaded Quickdraw Contours Software            | Yes  | Yes   | Yes   | Yes   | Yes  |
| Data Card Slots                                  | 2 SD™ cards  | 2 MicroSD™ cards  | 2 MicroSD™ cards  | 1 MicroSD™ card   | 1 MicroSD™ card  |
| Water Rating                                     | IPX7   | IPX7  | IPX7  | IPX7  | IPX7   |
| Mounting Options                                 | Bail or Flush  | Bail, Flush or Flat   | Bail or Flush   | Bail or Flush   | Bail or Flush  |
| Power Supply                                     | 10-32 V  | 10-32 V   | 10-20 V   | 10-20 V   | 10-20 V  |
| Typical Current Draw at 12 Vdc:                  | 2.5 A  | 2.2 A (1243xsv/1243)<br>1.8 A (943xsv/943)<br>1.5 A (743xsv/743)  | 2.2 A (106xs/106)<br>2.5 A (126xs/126)  | 1.95 A  | 1.5 A  |
| Connections                                      | Built-in wireless connectivity,<br>NMEA 2000: 1 port,<br>NMEA 0183: 1 port,<br>Marine Network: 2 ports,<br>Video in: 1 BNC | Built-in wireless connectivity, USB: 1 port,<br>NMEA 2000: 1 port, NMEA 0183: 1 port,<br>Marine Network: 2 ports (1243xsv/1243),<br>1 port (943xsv/943 and 743xsv/743),<br>Video in: 1 BNC, J1939<br>(1243xsv/1243) | NMEA 2000: 1 port,<br>NMEA 0183: 1 in and 1 out<br>Marine Network: 2 ports        | NMEA 2000: 1 port,<br>NMEA 0183: 1 in and 1 out<br>Marine Network: 1 port         | NMEA 2000: 1 port (64cv/63cv),<br>NMEA 0183: 1 in and 1 out  |

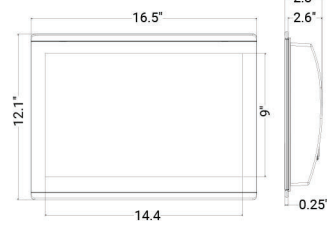
**GPSMAP 8624**



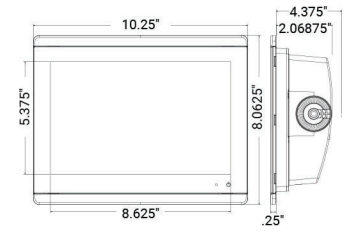
**GPSMAP 8622**



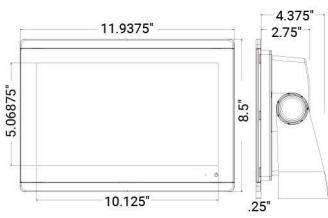
**GPSMAP 8617**



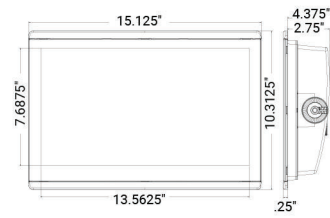
**GPSMAP 8610 / 8610XSV**



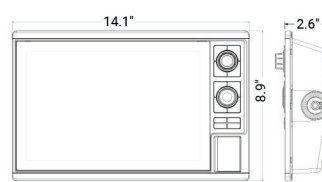
**GPSMAP 8612 / 8612XSV**



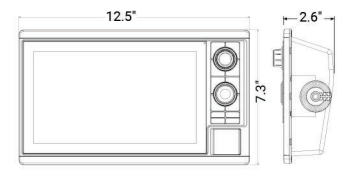
**GPSMAP 8616 / 8616XSV**



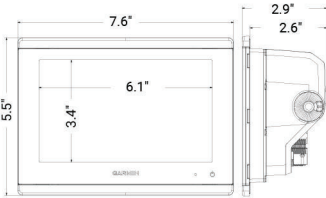
**GPSMAP I242 SERIES**



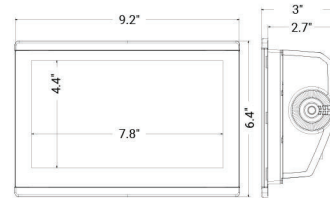
**GPSMAP I042 SERIES**



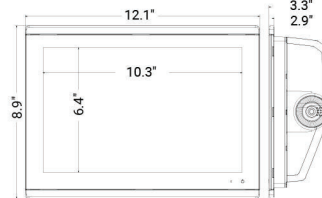
**GPSMAP 743/743XSV**



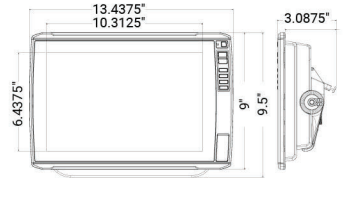
**GPSMAP 943/943XSV**



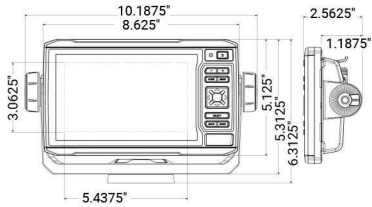
**GPSMAP I243/I243XSV**



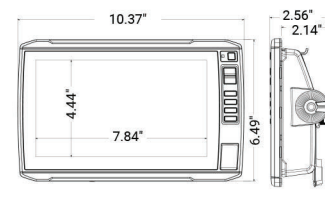
**ECHOMAP ULTRA I26/I26XS**



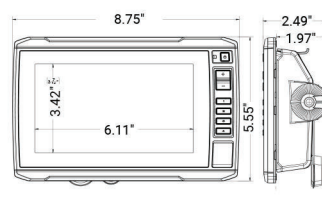
**ECHOMAP ULTRA I06/I06XS**



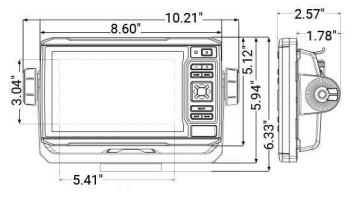
**ECHOMAP UHD 94SV/93SV**



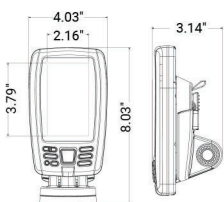
**ECHOMAP UHD 74SV/73SV & 74CV/73CV**



**ECHOMAP UHD 64CV/63CV**



**ECHOMAP PLUS 44CV/43CV**



**GARMIN GRID 20**

